

Data-Driven Modeling of the Airport Configuration Selection Process

Varun Ramanujam and Hamsa Balakrishnan

Abstract—The runway configuration is the set of the runways at an airport that are used for arrivals and departures at any time. While many factors, including weather, expected demand, environmental considerations, and coordination of flows with neighboring airports, influence the choice of runway configuration, the actual selection decision is made by air traffic controllers in the airport tower. As a result, the capacity of an airport at any time is dependent on the behavior of human decision makers. This paper develops a statistical model to characterize the configuration selection decision process using empirical observations. The proposed approach, based on the discrete-choice modeling framework, identifies the influence of various factors in terms of the utility function of the decision maker. The parameters of the utility functions are estimated through likelihood maximization. Correlations between different alternatives are captured using a multinomial “nested logit” model. A key novelty of this study is the quantitative assessment of the effect of inertia, or the resistance to configuration changes, on the configuration selection process. The developed models are used to predict the runway configuration 3 h ahead of time, given operating conditions such as wind, visibility, and demand. Case studies based on data from Newark (EWR) and LaGuardia (LGA) airports show that the proposed model predicts runway configuration choices significantly better than a baseline model that only considers the historical frequencies of occurrence of different configurations.

Index Terms—Airport runway configuration, air traffic control, air transportation, decision processes, discrete-choice models, maximum-likelihood estimation.

I. INTRODUCTION

MOST modern infrastructure systems involve significant interactions between automation and human decision makers. A key challenge in designing algorithms for these systems lies in reliably predicting the decisions made by the human operators. This paper addresses this challenge in the context of airport operations.

The runway system is generally believed to be a critical bottleneck in airport operations [1]. Most major airports are equipped with multiple runways, and at any time, a subset of these runways (and associated traffic directions) are selected to handle

arrivals and departures. This choice of runways, known as the airport or runway configuration, is a critical factor in determining airport capacity [2]–[5]. Air Traffic Control Tower personnel consider many factors including weather (wind and visibility), predicted arrival and departure demand, environmental considerations such as noise abatement procedures, and coordination of flows with neighboring airports, while selecting the runway configuration at any time. Runway configuration changes require increased coordination between the Tower personnel and the aircraft and ground crews, and therefore, frequent configuration switches are not desirable. However, little is known about the relative weightings given to the different factors that influence runway configuration selection.

Airport capacity predictions are a key input to a range of air traffic management functions, ranging from air traffic flow management [6], [7], to airport surface operations scheduling [8], and system-wide simulations [9]. These functions all assume either deterministic or probabilistic forecasts of airport capacities at different times. Since the capacity of an airport at any time depends on the runway configuration, the prediction of the runway configuration is a key step toward forecasting the capacity of an airport at any time. A better understanding of the underlying selection process will, in turn, help better predict the resultant runway configuration.

This paper proposes a statistical model that uses empirical observations to characterize the configuration selection process. The approach represents the configuration selection process as a discrete-choice model and infers the air traffic controllers’ utility functions in making these decisions so as to maximize the likelihood of the observed decisions. The result is a probabilistic prediction of the human agents’ decision on configuration selection, given a forecast of the operating conditions at any time. The objectives of this work are: 1) to determine a model of the configuration selection process, including the utility function that best (in terms of maximum-likelihood) explains the decisions that were made; and 2) to use the developed model to predict the runway configuration (and consequently, the runway capacity) 3 h ahead of time. The first of the two outcomes helps evaluate the relative importance of different factors (for example, wind, demand, etc.) that are believed to influence the decision process, while the second provides a vital input to air traffic management and simulation tools. A utility function that reflects the preferences of the decision makers will also enable the design of realistic objective functions for runway configuration optimization. The proposed approach is demonstrated using two years of operational data from New York’s LaGuardia International Airport (LGA) and Newark Liberty International Airport (EWR).

Manuscript received July 14, 2014; revised December 12, 2014; accepted February 4, 2015. Date of publication April 1, 2015; date of current version July 11, 2015. This work was supported in part by the National Science Foundation, through the NSF CPS project FORCES, under Grant 1239054. This paper was recommended by Associate Editor S. Landry.

V. Ramanujam is with Google, Mountain View, CA 94043 USA (e-mail: varunr43@gmail.com).

H. Balakrishnan is with the Department of Aeronautics and Astronautics, Massachusetts Institute of Technology, Cambridge, MA 02139 USA (e-mail: hamsa@mit.edu).

Color versions of one or more of the figures in this paper are available online at <http://ieeexplore.ieee.org>.

Digital Object Identifier 10.1109/THMS.2015.2411743

II. RELATED RESEARCH

Recent research efforts have focused on the development of tools that prescribe the optimal sequencing of runway configurations, assuming knowledge of their respective capacities, expected airport demand, and prevailing operating conditions influencing configuration feasibility [10]–[15]. A significant challenge to the practical implementation of such methods is the incorporation of the constraints and objectives of the human operators. For example, it is known that configuration changes require significant coordination between the air traffic controllers (both at the airport and in the surrounding airspace), pilots, and other ground personnel, and increase controller workload; little is, however, known about the role that “inertia” or resistance to configuration changes plays in the configuration selection process. As a result, tools that suggest runway configuration choices have been found to recommend significantly more frequent changes than was seen in actual operations [16]. Few prior studies have conducted systematic large-scale evaluations of their results using real data [17]; for example, Oseguera-Lohr *et al.* simulate 12 days of data from Memphis (MEM), Dallas Fort-Worth, and New York’s John F. Kennedy (JFK) airports [16]. By contrast, this paper presents an evaluation over one entire year’s (2007) data from New York’s LaGuardia (LGA) and Newark (EWR) airports.

NASA’s System-Oriented Runway Management concept is aimed at designing decision-support tools that will improve the usage of limited runway resources [18]. In considering runway configuration management, the concept considers both strategic prediction of runway configuration usage a few hours ahead of time, and tactical decision support that helps air traffic controllers choose the optimal runway configuration, and even the associated arrival-departure mix. This paper focuses on the former aspect, namely, the prediction of the runway configuration in a given 15-min period, at a 3-h time horizon.

A. Descriptive Versus Prescriptive Models

Broadly speaking, there are two approaches to modeling decision processes such as runway configuration selection. *Prescriptive models* aim to recommend or *prescribe* a decision or course of action to the operators. These models are built to optimize some desired objective (for example, delays), considering the feasible options as determined by various operational constraints. Most prior research on airport configuration selection has focused on these types of models [10]–[15]. As their name suggests, *descriptive models* are built to *describe* the current decision-making process and thereby predict the outcomes of the process. To the best of our knowledge, this aspect has received little attention in the context of runway configuration selection [17], although data mining approaches have been used to forecast airport arrival rates (AARs), especially during ground delay programs [19]–[22]. The need for descriptive models has been acknowledged in the context of other human-automation decision systems and tasks, including situation awareness and functional allocation [23], [24]. It is important to note that descriptive models can help develop better prescriptive models: Delay (which depends on the relationship between capacity and

demand) is not the only objective in the decision making; a better understanding of the importance of other factors such as inertia can enable the development of prescriptive models that are more reflective of operational considerations and, therefore, have a greater likelihood of being adopted in practice [12], [16]. Traditionally, descriptive models are labor- and time-intensive and require extensive site visits, interviews, qualitative analyses, and ethnographic studies [23]–[25]. The increasing availability of operational data motivates the development of data-driven approaches to characterize decision processes. These approaches can easily be automated and are typically easier to adapt to different operating environments and application domains. While descriptive models developed using data mining techniques may not be as “rich” as those built from qualitative analyses (and therefore may not be suitable for evaluating features such as cognitive structure and exceptional situations), they may be sufficient for the purpose of predicting nominal behavior.

This paper takes a data-driven approach to the problem of modeling the configuration selection process: A discrete-choice model of the runway configuration selection process is estimated using archived operational data, quantifying the effect of factors that influence the utility function of the air traffic controllers. In short, while prior efforts primarily aim to guide controllers on what runway configurations to select (in order to optimize some predetermined objective such as throughput), this study attempts to model how controllers currently select runway configurations and the relative importance of key influencing factors. The rationale behind this approach is that the actual objective functions are more complex than just delays or throughput and are learned by controllers through experience. The utility functions of the different alternatives are represented as functions of the candidate factors (wind, demand, etc.) that can influence configuration selection. The discrete-choice framework, which has been previously applied to other applications as diverse as modeling driver lane-changing behavior [26], travel demand [27], [28], residential and medical practice location [29], [30], enables the estimation of the relationship between influencing factors and the favorability of a configuration, and the prediction of future configuration choices made in response to evolving weather and demand conditions. The main assumption is that the decisions are nominally driven by an underlying utility function, which is consistent across the range of rational decision-makers. In the absence of such consistent behavior, the models will be poor predictors of system performance. The proposed discrete-choice approach tries to reverse-engineer the utility function that best explains (in the maximum-likelihood sense) the observed decisions and uses this utility function to predict future decisions.

The rest of this paper describes the problem of runway configuration selection and the proposed methodology for determining a discrete-choice model of the configuration selection process. The approach is illustrated using case studies of LGA and EWR airports, with models that are trained on data from the year 2006, and tested on data from 2007. The results demonstrate the proposed model’s ability to accurately predict the choice of runway configuration, given operating conditions such as wind, visibility, demand, etc.

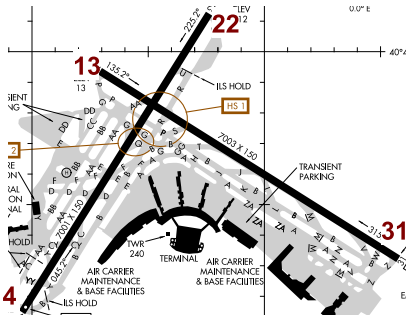


Fig. 1. Layout of LGA airport, showing its runways and their labels [32].

III. OPERATIONAL BACKGROUND

A. Terminology

Runway configurations are typically represented in the form “R1, R2 | R3, R4,” where R1 and R2 are the arrival runways, and R3 and R4 are the departure runways. Runways are denoted by their magnetic bearing (rounded off to the nearest 10°). Fig. 1 shows the layout of LGA, which has two runways. Each runway has two possible labels, depending on the direction of operations. Therefore, the runway labeled “4” lies at an angle of 40° to the magnetic North, while the opposite direction of the same runway (at a 220° angle to the magnetic North) corresponds to runway “22.” Similarly, “13” and “31” refer to the two directions of the same runway, at angles of approximately 130° and 310°, respectively. A given runway can be used at any time for arrivals, departures, or both simultaneously, and in one of two possible directions. In theory, an airport with N runways has $O(6^N)$ possible configurations. For LGA (two runways), there are 32 possible configurations. During operational hours (6A.M.–midnight), only ten of these configurations are seen to be used in practice [31].

The *capacity* of a runway configuration refers to the number of arrival and departure operations that the airport can serve in some interval of time, typically 15 min or an hour. There is a tradeoff between the number of arrivals and the number of departures than the airport can serve; this tradeoff is represented by the *capacity envelope*. The capacity envelope of an airport at any time varies by configuration, and also by the prevailing weather conditions [2]. Of particular interest for operational decisions (such as planning Ground Delay Programs) is the AAR, which corresponds to the arrival capacity of the airport at any time.

B. Runway Configuration Selection

The Tower Supervisor or the Controller-in-Charge (CIC) typically have the primary responsibility of determining which runways are active at any time [33]. A variety of factors are considered in selecting the runway configuration, including surface wind direction and speed, wind shear/microburst alerts, coordination with adjacent airport flows, severe weather activity, and environmental considerations such as noise abatement procedures [33]. At many airports (LGA and EWR, for example), the

Traffic Management Coordinator (TMC) in consultation with the Supervisor/CIC selects the runway configuration, considering current and forecast weather, optimum arrival/departure rates, and noise abatement. The TMC is generally expected to maximize operational efficiency through the proper selection of runway configuration, procedures, and flow control initiatives.

1) *Coordination*: At metroplexes in which there are several busy airports in close proximity of each other, the coordination requires coordination with the terminal-airspace (TRACON) as well. Letters of Agreement between the TRACON and the individual facilities govern the coordination protocols.

2) *Documentation*: The National Traffic Management Log records traffic management activities (including runway configuration selection) at all major facilities. Seventy-seven airports in the U.S. are required to report their runway configurations and the associated arrival and departure rates on a quarter-hourly basis, which are then archived in the Aviation System Performance Metrics (ASPM) database [34]. The TMC’s responsibilities include the reporting of these and other statistical data [35].

IV. DISCRETE-CHOICE MODELS

Discrete-choice models address problems in which a decision maker needs to select one option from a finite set of alternatives [27]. The decision maker is assumed to select the solution that maximizes a utility function that depends on several influencing factors (known as attributes, and denoted by the vector \bar{X}). The utility function for each alternative is modeled as the sum of an observed component V (which is a linear combination of the influencing factors) and an unobserved component ϵ represented through error terms. In other words, consider the observation of the n th selection decision. Let C_n be the set of alternatives available for the n th choice. Then, the utility of choice $c_i \in C_n$ is given by

$$V_{in} = \alpha + \bar{\beta} \cdot \bar{X}_{in} \quad (1)$$

$$U_{in} = V_{in} + \epsilon_{in}. \quad (2)$$

Equation (1) reflects the assumption that the utilities are linear functions of the attribute vector, \bar{X}_{in} , and weights given by the vector $\bar{\beta}$. Equation (2) reflects errors due to unmodeled effects or noise. For the n th observation, the decision maker is assumed to select the alternative $c_j \in C_n$ such that

$$j = \arg \max_{i: c_i \in C_n} U_{in}. \quad (3)$$

The error terms, ϵ_{in} , are assumed to be Gumbel-distributed, that is, the p.d.f is assumed to be

$$f(x) = \mu e^{-\mu(x-\eta)} e^{-e^{-\mu(x-\eta)}} \quad (4)$$

where $\eta \in \mathbb{R}$ is known as the location parameter, and $\mu \in \mathbb{R}^+$ is known as the scale parameter. The Gumbel distribution is used as an approximation to the normal distribution, since it results in computationally tractable analytical expressions for the probability of observing a particular choice [27].

When one assumes that the error terms are i.i.d and drawn from a Gumbel distribution, the resulting model is known as a multinomial logit (MNL) model [27]. The choice probability

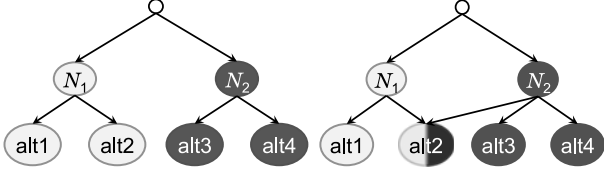


Fig. 2. (Left) NL model framework. (Right) CNL model framework.

expression for the MNL model is given by

$$P(c_i|C_n) = \frac{e^{V_{in}}}{\sum_{j:c_j \in C_n} e^{V_{jn}}}. \quad (5)$$

In other words, (5) provides the probability of the n th choice being c_i , given that the set of feasible alternatives was C_i . The probability of selecting an alternative c_i increases as the observed component of its utility (given by V_{in}) increases relative to those of the other alternatives.

Each 15-min interval can be assumed to be a unique instance n for an air traffic controller to select the utility-maximizing configuration c_i out of the list of feasible configurations C_n at that time. However, the assumption of independent error terms in the MNL model may be too restrictive for this application. For example, if two candidate configurations use the same arrival (or departure) runway, their error terms may be correlated due to the same unmodeled effects. Extensions such as the nested logit (NL) and the cross-nested logit (CNL) models overcome this challenge [27]. These models permit correlated errors within specified subsets of alternatives, represented by nests. Fig. 2 illustrates four alternatives $\{\text{alt1}, \text{alt2}, \text{alt3}, \text{alt4}\}$, grouped into two nests, N_1 and N_2 , in (left) an exclusive manner (NL representation), and (right) an overlapping manner (CNL representation) with alt2 shared between the two nests. Choices within a nest have correlated error terms. Under the NL model shown, alt1 and alt2 would have a common component to the error terms, while alt2 and alt3 would have independent errors; under the CNL model shown, alt2 would have a common component of error with alt1, and another common component with alt3 and alt4.

The expressions for alternative probabilities for the NL and CNL models and their comparisons with the MNL model are described in [27]. For example, the selection probability for alternative alt1 in the NL model [see Fig. 2(left)] is given by

$$P(\text{alt1}|\{\text{alt1}, \text{alt2}, \text{alt3}, \text{alt4}\}) = P(\text{alt1}|N_1)P(N_1|\{N_1, N_2\}) \quad (6)$$

$$\text{where } P(\text{alt1}|N_1) = \frac{e^{\mu_{N_1} V_{\text{alt1}}}}{\sum_{j:c_j \in \{\text{alt1}, \text{alt2}\}} e^{\mu_{N_1} V_j}} \quad (7)$$

$$P(N_1|\{N_1, N_2\}) = \frac{e^{V_{N_1}}}{e^{V_{N_1}} + e^{V_{N_2}}} \quad (8)$$

$$V_{N_1} = \frac{1}{\mu_{N_1}} \log \sum_{j:c_j \in \{\text{alt1}, \text{alt2}\}} e^{\mu_{N_1} V_j} \quad (9)$$

and so on.

The scale parameters μ_{N_1} and μ_{N_2} reflect the extent of error correlation among alternatives within nests N_1 and N_2 , respectively.

A. Parameter Estimation

The model parameters $[\alpha, \bar{\beta}]$ in (1) and the scale parameters μ in (7) are estimated using the maximum-likelihood approach. The vector $\bar{\beta}$ corresponds to the weighting of different attributes in the utility function. The likelihood of a given dataset of choice observations is the joint probability of observing the sequence of choices recorded. Configuration choice probabilities at different times are assumed to be conditionally independent of one another, given the explanatory factors \bar{X}_{in} . Therefore,

$$\mathcal{L}(\alpha, \bar{\beta}, \mu) = P((c_1|C_1) \cap \dots \cap (c_N|C_N) | \alpha, \bar{\beta}, \mu, \bar{X}) \prod_{i=1}^N P(c_i|C_i)$$

where c_i is the selected alternative, and C_i is the set of available alternatives for the i th observation, $i = 1, 2, \dots, N$.

The parameter estimates $(\hat{\alpha}, \hat{\bar{\beta}}, \hat{\mu})$ are those that maximize this likelihood:

$$(\hat{\alpha}, \hat{\bar{\beta}}, \hat{\mu}) = \arg \max_{\alpha, \bar{\beta}, \mu} \mathcal{L}(\alpha, \bar{\beta}, \mu). \quad (10)$$

Likelihood-maximization is a nonlinear optimization problem. BIOGEME, a software package that specializes in estimating discrete-choice models through customized in-built algorithms, was used to carry out the optimization [36].

B. Model Specification

Model specification refers to the attributes \bar{X}_{in} that determine the utility function. The specification is developed through iterative consideration of candidate factors. All three types of models (MNL, NL, and CNL) of the airport configuration choice process were determined and evaluated. The statistical significance of factors were assessed using the Likelihood-ratio test [27] for nested hypothesis testing, and the Cox composite model test [37], [38] for nonnested hypothesis testing. The Hausman–McFadden test [39] was used to check the statistical validity of the NL or CNL models over the MNL model.

V. CASE STUDIES

A. Training Data

The proposed approach was used to model configuration selection processes at LGA and EWR airports. The training dataset for each airport comprised of records from the Federal Aviation Administration's ASPM database for the year 2006 [31]. This database reports the chosen configuration as well as other prevailing airport conditions such as weather, demand, etc., for each 15-min interval during the year. Data from hours between midnight and 6 A.M. were excluded from the dataset, since these periods have very low demand, and the reporting is prone to errors. Feasible configurations for each time period were determined by the set of runways that did not exceed the FAA-specified

safety thresholds for tailwinds (5 kn) and cross-winds (20 kn). Observations with infeasible runway configurations (likely due to reporting errors) were also filtered from the data.

B. Candidate Influencing Factors in Utility Function

There are several factors that potentially influence the choice of configuration (from among the feasible options) in any time period. The following factors were explicitly included in the utility functions of the discrete-choice model.

- 1) *Inertia*: Configuration changes require extensive coordination among the different airport stakeholders and are thought to cause a loss in airport throughput [10], [12], [40]. Since maintaining the configuration from the previous time interval is preferable to a significant extent, the utility function of the incumbent configuration is expected to be higher than those of the other candidate configurations due to the inertia factor.
- 2) *Meteorological Conditions*: The prevailing weather conditions, indicated by the height of the cloud ceiling and the visibility at the airport, influence the choice of runway configuration. Therefore, the utility function considers whether the airport is operating under good visibility (visual meteorological conditions, or VMC) or reduced visibility (instrument meteorological conditions).
- 3) *Wind Speeds and Direction*: Observed wind speeds and directions are used as attributes in the utility function. Since significant tailwinds are not favorable for operations, headwinds are expected to have a positive effect on the utilities of the corresponding configurations. Significant headwinds (winds aloft) may also have an adverse effect on operations by decreasing spacing between pairs of aircraft on final approach, a phenomenon known as *compression* [5]. As a first step, this paper assumes a single linear term representing the headwind component of the speed along each runway; the methodology can be extended to incorporate different linear terms for head- and tailwinds, as well as compression effects.
- 4) *Demand*: During periods of high demand, a high-capacity configuration is likely to be favored. Arrival and departure demand are both considered as factors.
- 5) *Noise Abatement Procedures*: In order to minimize disturbance to neighboring communities, many major airports impose noise rules regarding runway use during nighttime hours. In the New York area, these rules are imposed between 10 P.M. and 7 A.M.; these times are, therefore, likely to have a negative impact on the utility functions of some affected configurations. Since the hours of midnight to 6 A.M. are not included in the study, only 3 h a day of the dataset are subject to noise abatement.
- 6) *Configuration Proximity*: Configuration changes require increased coordination and disrupt the flow of aircraft on the surface. The workload associated with a configuration change may vary depending on the configurations before and after the switch: For example, a configuration change that only requires the addition of a departure runway may be easier to implement than one that changes the

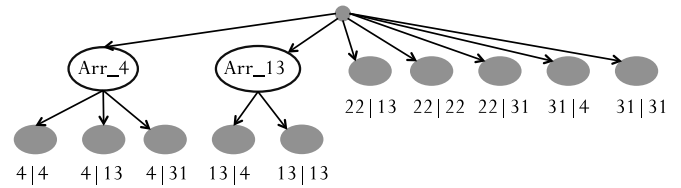


Fig. 3. Estimated NL structure for LGA configuration selection (for year 2006).

direction of runway operations. The configuration change type, a categorical variable, is denoted by the differences in angles between the arrival and departure runways of the preceding and succeeding configurations. A configuration change which results in a 90° reorientation of the arrival runway and a 180° reorientation of the departure runway is labeled $(90^\circ, 180^\circ)$.

- 7) *Interairport Coordination*: In multi-airport terminal areas, flows into and out of the different airports need to be coordinated. In the New York area, John F. Kennedy International airport (JFK), LGA, and EWR all lie in close proximity of one another. JFK is the largest of the three airports, annually serving more than 2.5 times the number of operations that either of the other two airports. It is, therefore, expected that the configuration chosen at JFK at any time influences the configuration choice at LGA and EWR. Categorical variables are used to represent interactions between pairs of runway configurations at JFK and at LGA/EWR.

C. Estimation of Discrete-Choice Models and Utility Functions

The utility specifications and error structures were developed and statistically evaluated, as described in Section IV-B. The resultant models are discussed below.

1) *LGA Model*: The training dataset had a total of 17 716 choice observations postfiltering (i.e., data from 17 716 time periods), featuring a total of ten distinct configuration alternatives. The final model has an NL structure with two alternative nests, grouping configurations with arrival runways 4 and 13, respectively, as illustrated in Fig. 3. The other configurations are modeled as singleton nests.

The results of the utility coefficients are tabulated in Table I, along with the corresponding t-statistics in parenthesis. Parameters are considered to be statistically significant if the absolute value of their t-statistic exceeds 1.96. The results support the *a priori* hypotheses on the effects of inertia and headwinds, both of which are found to be strongly statistically significant. Further analysis shows that the estimates of configuration proximity and JFK coordination variables are consistent across multiple years. The scale parameters μ_{Arr_4} and μ_{Arr_13} are estimated to be 1.1 and 1.65, respectively. The discrete-choice model identified for LGA comprises of 36 parameters.

2) *EWR Model*: The training dataset had a total of 23 506 choice observations after filtering and featured 20 different configurations. The final model had an NL structure with one

TABLE I
ESTIMATED UTILITY FUNCTIONS (VALUES OF VARIOUS ELEMENTS OF $\bar{\beta}$) FOR
THE DISCRETE-CHOICE MODEL FOR LGA

1. Inertia	
Configuration from previous time step (incumbent)	+5.100 (68.8)
2. Meteorological Conditions	
13 13 in VMC	+1.530 (2.72)
22 22 in VMC	+1.830 (2.79)
31 31 in VMC	+1.710 (2.20)
4 13 in VMC	+1.150 (3.42)
22 13 in VMC	+0.800 (2.10)
22 31 in VMC	+1.350 (2.71)
31 4 in VMC	+1.540 (4.30)
13 4 in VMC	+0.830 (1.47)
3. Headwind speed	
Relative to arrival runway	+0.044 (8.90)
Relative to departure runway	+0.029 (5.0)
4. Demand	
Configuration that uses both runways (high capacity)	+1.650 (9.25)
5. Noise abatement	
Runway 31 for morning 6–8 am	+1.320 (7.40)
Runway 4 for evening 10 pm–12 am	+0.930 (3.8)
Runway 31 for evening 10 pm–12 am	–0.290 (–1.30)
6. Configuration proximity	
Switch type (90°, 180°)	–1.780 (–7.53)
Switch type (180°, 180°)	–2.200 (–4.40)
7. Coordination with JFK	
Departure runways (31@LGA and 22@JFK)	+0.959 (4.10)
Departure runways (13@LGA and 31@JFK)	–1.050 (–3.59)
Arrival runways (22@LGA and 31@JFK)	–1.140 (–5.83)
Departure runways (4@LGA and 4@JFK)	+0.440 (1.75)
Arrival runways (31@LGA and 4@JFK)	–0.400 (–1.7)
Departure runways (13@LGA and 22@JFK)	–0.588 (–1.69)
Departure runways (13@LGA and 13@JFK)	–0.404 (–1.37)

nest corresponding to the use of an additional arrival runway, as shown in Fig. 4. This nesting suggests that configurations with an additional arrival runway share commonalities in terms of unobserved factors influencing their preferences.

The results of the utility coefficients are tabulated in Table II, along with the corresponding t-statistics in parenthesis. Estimates for which the absolute values of the t-statistics are less than 1.96 are considered not to be statistically significant. The nest scale parameter $\mu_{\text{extra_Arr}}$ is estimated to be 1.45. The discrete-choice model identified for EWR comprises 57 parameters.

Once again, inertia and wind effects were found to be statistically significant. The estimates of configuration proximity and JFK coordination were found to be consistent across multiple years.

D. Model Evaluation

The proposed models are evaluated by comparing the configuration choice predictions of the estimated discrete-choice model and a baseline model for an independent test dataset. The test set consisted of ASPM records from 2007, refined using the same filters as the training dataset (2006 data). The baseline model is described in the next section, following by a discussion of the test results.

1) *Baseline Model:* The use of the discrete-choice modeling framework enables the incorporation of relevant influencing attributes like weather conditions, demand, etc., in determination

of configuration selection probability. An alternative approach is to compute explicitly, using data, the probability of a particular configuration being chosen, given the configuration in effect in the previous time interval. Such an approach would generate a transition probability matrix Δ , where an element $\Delta(i, j)$ would represent the probability of configuration j being chosen in any time interval, given that configuration i was active in the previous time interval. Peterson (1992) previously proposed such a model for representing airport capacity dynamics [41].

Given $C_t \forall t = \{1, 2, \dots, T\}; C_t \in \{1, \dots, N_c\}$, where T is the total number of time intervals, N_c is the total number of possible configurations, and C_t is the configuration selected at time t , the transition matrix Δ is given by

$$\Delta(i, j) = \frac{\sum_{t=1}^T \mathbf{1}(C_t = j) \mathbf{1}(C_{t-1} = i)}{\sum_{t=1}^T \mathbf{1}(C_{t-1} = i)} \quad \forall i, j \in \{1, \dots, N_c\}$$

where $\mathbf{1}(\cdot)$ is the indicator function that is 1 if its argument is true, and 0 otherwise.

The baseline models were determined using the same training data as the discrete-choice models (ASPM 2006). Tables III and IV present the estimated transition probabilities ($\Delta_{i,j}$) for the most prominent configurations at LGA and EWR.

2) *Model Evaluation Results:* Considering a typical airport configuration planning horizon, a 3-h forecast horizon is considered. The discrete-choice model predicts the probability distribution (over all possible choices) of the runway configuration in the next time period. Bayes' rule can then be used to recursively compute the probability of each runway configuration being selected 3 h in the future, given the current runway configuration, and demand and weather over the next 3 h.

For each runway configuration, we also calculate the average (over the test data) probability with which that configuration was predicted for time periods when it was observed. Since a perfect forecasting mechanism would always correctly identify the observed runway configuration with 100% certainty, it would have an average prediction probability equal to 1.

The results of the evaluation are shown in Table V for LGA, and Table VI for EWR. Although both the discrete-choice and baseline models consider all configurations reported in the training data (ten for LGA and 20 for EWR), only the configurations that are seen more than 3% of the time are compared in the tables, for the sake of simplicity. The results corresponding to time periods that are not within 3 h of a switch are shown separately from time periods in the temporal vicinity of (i.e., within 3 h before or after) a switch. The tables show the average predicted probability of the runway configuration that actually occurred, both near and away from configuration switches. The prediction probabilities in the vicinity of a switch are conditioned on the occurrence of a switch sometime in that 3-h interval.

E. Discussion, Limitations of Approach, and Future Research

The evaluation results show that the predictions generated by the discrete-choice model are significantly better than those of the baseline model, despite needing considerably fewer parameters. For example, the discrete-choice model for EWR comprises 57 parameters, as opposed to 400 parameters in the baseline

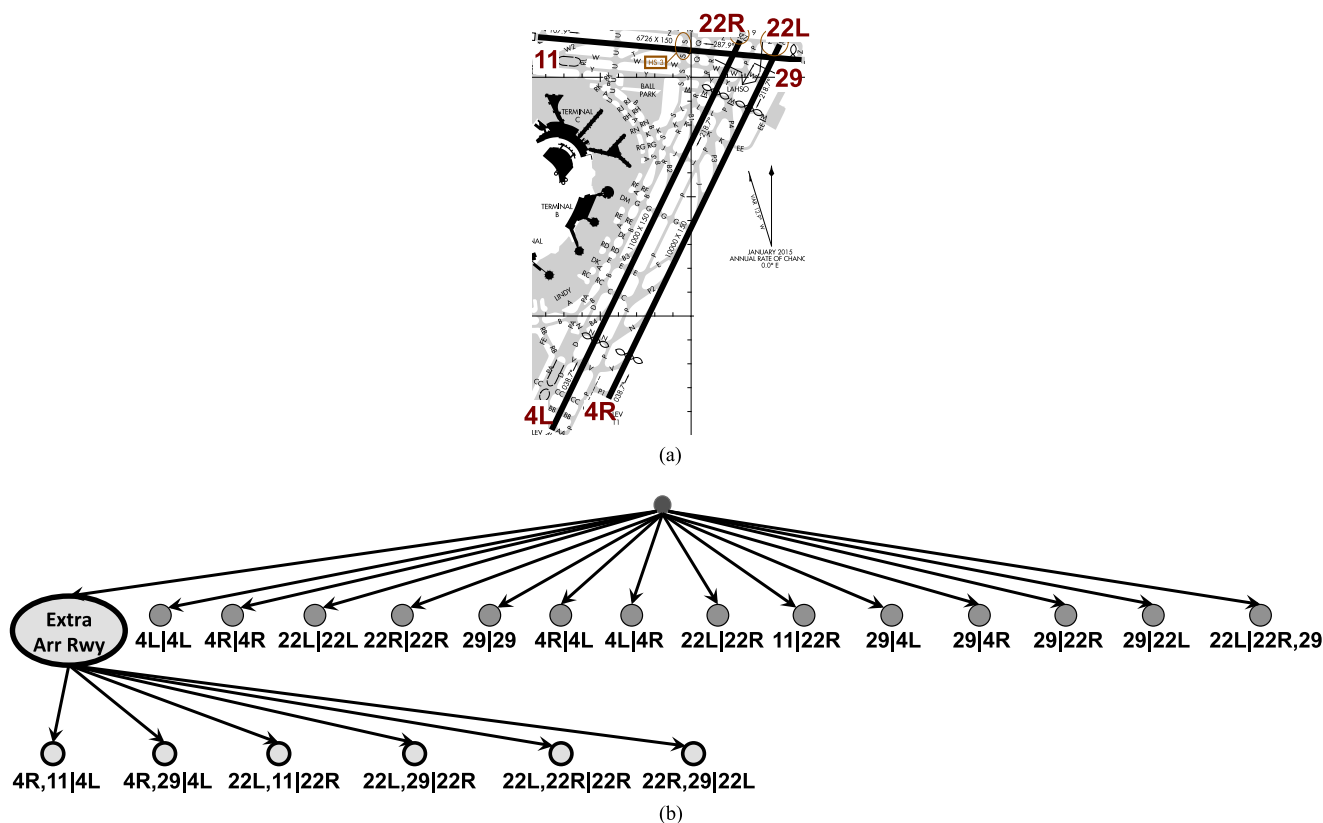


Fig. 4. Layout of EWR, showing its runways and their labels [32], along with the estimated NL structure for EWR configuration selection (for year 2006). (a) Layout of EWR airport [32]. (b) Structure of estimated nested logic model for EWR.

model. Similarly, the discrete-choice model for LGA contains 36 parameters (compared with 100 parameters in the baseline model).

The discrete-choice models show that inertia and wind effects are important factors in the decision-making process and are statistically significant at both airports. While wind speed and direction are well known to be key factors that influence runway configuration selection [17], [18], this paper represents the first time that the influence of inertia has been quantified.

If the most-likely configuration is chosen for each time period, the discrete-choice model has an accuracy of more than 85% for LGA and more than 82% for EWR. By contrast, prior research achieved a prediction accuracy of 75% at LGA and 63% at JFK, respectively [17]. The predicted probability of observed configurations from the discrete-choice model is consistently higher than from the baseline model, both near and away from configuration switches. The predicted probabilities are lower in the vicinity of configuration switches, chiefly due to the inertia term, which biases predictions toward the incumbent configuration. Configuration changes are relatively infrequent, occurring about 3.1 times per day at LGA, and 2.3 times per day at EWR. Prediction performance also deteriorates for less frequently used configurations.

The main limitation of a data-driven approach is that it relies on prior observations (in the training data). As a result, it will only predict configurations that have been observed before

and will not apply when there are major changes in the decision process, such as capacity enhancements or new procedures. The reliance on data also implies that the prediction of infrequently observed configurations is difficult. The discrete-choice modeling approach assumes the presence of rational decision makers who share a utility function that reflects nominal system behavior.

This paper assumed that the demand and wind variables were accurately known at the 3 h planning horizon. In reality, there are errors in forecasting both these quantities, which will increase as the forecast horizon increases. An important direction of future research is the study of the impacts of forecast errors on configuration prediction.

The results presented here demonstrate the potential of the discrete-choice modeling approach in building descriptive models of the runway configuration process. The methodology can be easily extended to include additional features in the utility function, as well as other decisions, such as combinations of configurations and procedures. Other potential model refinements are the use of configuration-specific inertia terms in the utility function, terms that differentiate between headwinds and tailwinds, and wind gusts. It is important to note that the addition of terms in the utility function will increase the number of parameters and, therefore, increase the model complexity. Future work will investigate the tradeoffs between model complexity and prediction performance. Finally, the data-driven nature of

TABLE II
ESTIMATED UTILITY FUNCTIONS (VALUES OF VARIOUS ELEMENTS OF $\bar{\beta}$) FOR
THE DISCRETE-CHOICE MODEL FOR EWR

1. Inertia	
Configuration from previous time step (incumbent)	+4.820 (66.60)
2. Meteorological Conditions	
22L,11 22R in VMC	-0.025 (-4.96)
22L,22R 22R in VMC	-0.009 (-3.10)
4L 4R in VMC	-0.025 (-2.73)
4R,11 4L in VMC	-0.013 (-2.67)
22L,29 22R in VMC	-0.030 (-2.20)
22L 22L in VMC	-0.027 (-2.12)
29 29 in VMC	-0.014 (-1.96)
22R,29 22L in VMC	-0.018 (-1.89)
4R,29 4L in VMC	-0.006 (-1.67)
4R 4R in VMC	-0.021 (-1.60)
3. Headwind speed	
Relative to primary arrival runway	+0.033 (3.00)
Relative to primary departure runway	+0.054 (4.24)
Relative to extra arrival runway	+0.027 (3.93)
4. Demand	
For parallel runway configuration (when demand exceeds capacity of crossing runway configuration)	+1.090 (8.33)
For configurations with extra arrival runway (when arrival demand exceeds parallel runway capacity)	+0.760 (5.90)
For configurations with extra departure runway (when departure demand exceeds parallel runway capacity)	+1.780 (7.15)
5. Noise abatement	
Runway 11 for morning 6–8 am	-1.670 (-7.35)
Runway 29 for morning 6–8 am	-1.860 (-6.60)
6. Configuration proximity	
Switch type (0°, 90°)	-0.98 (-3.73)
Switch type (90°, 90°)	-0.620 (-1.80)
Switch type (0°, 180°)	-1.700 (-6.74)
Switch type (90°, 180°)	-2.230 (-3.23)
Switch type (180°, 180°)	-0.420 (-3.97)
7. Coordination with JFK	
Departure runways (4@EWR and 31@JFK)	+0.826 (2.35)
Departure runways (22@EWR and 13@JFK)	-1.140 (-2.35)
Departure runways (29@EWR and 13@JFK)	-0.694 (-2.73)
Departure runways (22@EWR and 4@JFK)	-0.615 (-1.32)
Arrival runways (4@EWR and 22@JFK)	-1.250 (-3.07)
Arrival runways (11@EWR and 13@JFK)	+0.437 (2.57)
Arrival runways (11@EWR and 31@JFK)	+0.576 (2.84)
Arrival runways (22@EWR and 13@JFK)	+1.200 (2.95)
Arrival runways (22@EWR and 22@JFK)	-0.940 (-2.63)
Arrival runways (29@EWR and 13@JFK)	+1.130 (4.08)
Arrival runways (29@EWR and 31@JFK)	+1.220 (4.17)
Arrival runways (29@EWR and 22@JFK)	+0.449 (1.66)

the proposed approach also makes it amenable to application at other airports.

VI. CONCLUSION

Runway configuration selection is a key driver of airport capacity and is based on decisions made by air traffic controllers. Accurate forecasts of runway configuration and the resulting airport capacity are key inputs to air traffic management algorithms. This paper proposed a data-driven approach to modeling the configuration selection process using operational data. The dependence of configuration choice on influencing factors like weather, arrival and departure demand, noise mitigation directives, coordination with neighboring airports, etc., was identified and estimated through a utility function. A key contribution was a quantitative assessment of inertia, namely, the resistance to configuration changes.

TABLE III
BASELINE MODEL ESTIMATES FOR LGA, FOR THE MOST FREQUENTLY
OCCURRING CONFIGURATIONS

	4 4	31 31	4 13	22 13	22 31	31 4
4 4	0.941	0	0.021	0.011	0.002	0.018
31 31	0.001	0.957	0	0.002	0.019	0.019
4 13	0.004	0	0.974	0.013	0	0.004
22 13	0.001	0	0.005	0.980	0.007	0.003
22 31	0	0.005	0.001	0.008	0.972	0.009
31 4	0.003	0.003	0.007	0.003	0.008	0.977

The complete baseline model considers all ten configurations reported at LGA in 2006.

TABLE IV
BASELINE MODEL ESTIMATES FOR EWR, FOR THE MOST FREQUENTLY
OCCURRING CONFIGURATIONS

	1	2	3	4	5	6
1. 4R 4L	0.983	0.006	0.003	0.006	0.001	0
2. 4R,11 4L	0.019	0.972	0	0.005	0.003	0
3. 4R,29 4L	0.019	0	0.973	0.007	0	0
4. 22L 22R	0.004	0	0.001	0.987	0.003	0.004
5. 22L,11 22R	0.004	0	0	0.016	0.976	0.003
6. 22L 22R,29	0.001	0	0.001	0.040	0.013	0.941

The complete baseline model considers all 20 configurations reported at EWR in 2006.

TABLE V
MODEL EVALUATION RESULTS FOR LGA

Outside temporal vicinity of switches			
Avg. prob. of prediction			
Configuration	Frequency	Baseline	Discrete-Choice
22 13	4403	0.81	0.95
22 31	3725	0.73	0.92
31 4	2989	0.77	0.90
4 13	2339	0.74	0.91
31 31	1211	0.61	0.70
4 4	599	0.50	0.69
Within temporal vicinity of switches			
Configuration	Frequency	Baseline	Discrete-Choice
31 4	1103	0.48	0.71
22 31	1043	0.50	0.74
22 13	1024	0.55	0.76
4 13	569	0.47	0.58
31 31	403	0.31	0.57
4 4	135	0.31	0.44

The proposed discrete-choice modeling framework was applied to two major airports in the New York area, LaGuardia (LGA) and Newark (EWR). Evaluation of the proposed model showed that the average probability of predicting the observed configuration 3 h in advance was more than 0.8 for the more frequently used configurations, during time periods away from configuration changes. Although the predictive performance deteriorated near switches, the average prediction probability for the observed configurations was more than 0.7 for the most frequently used configurations at both airports.

The discrete-choice model required fewer parameters than a baseline Markovian model and yet yielded better predictions. In

TABLE VI
MODEL EVALUATION RESULTS FOR EWR

Outside temporal vicinity of switches			
Avg. prob. of prediction			
Configuration	Frequency	Baseline	Discrete-Choice
22L 22R	6583	0.88	0.87
4R 4L	4173	0.84	0.87
22L,11 22R	1686	0.77	0.94
4R,11 4L	1087	0.74	0.88
4R,29 4L	715	0.74	0.81
22L 22R,29	211	0.52	0.16
Within temporal vicinity of switches			
Configuration	Frequency	Baseline	Discrete-Choice
22L 22R	2073	0.70	0.73
4R 4L	1303	0.65	0.73
22L,11 22R	799	0.32	0.76
22L 22R,29	573	0.24	0.21
4R,11 4L	505	0.40	0.74
4R,29 4L	336	0.29	0.70

addition to determining realistic objective functions and models that can be used to design decision-support tools, the proposed methods present a promising approach to modeling systems driven by human decision processes.

REFERENCES

- [1] H. R. Idris, B. Delcaire, I. Anagnostakis, W. D. Hall, N. Pujet, E. Feron, R. J. Hansman, J. P. Clarke, and A. R. Odoni, "Identification of flow constraint and control points in departure operations at airport systems," in *Proc. AIAA Guid., Navigat. Control Conf.*, Aug. 1998, Paper AIAA-98-4291, pp. 947–956.
- [2] E. Gilbo, "Airport capacity: Representation, estimation, optimization," *IEEE Trans. Control Syst. Technol.*, vol. 1, no. 3, pp. 144–153, Sep. 1993.
- [3] W. D. Hall, "Efficient capacity allocation in a collaborative air transportation system," Ph.D. dissertation, Operations Res. Center, Massachusetts Inst. Technol., Cambridge, MA, USA, 1999.
- [4] E. Gilbo and K. Howard, "Collaborative optimization of airport arrival and departure traffic flow management strategies for CDM," presented at the 3rd USA/Europe Air Traffic Manage. R&D Semin., Napoli, Italy, 2000.
- [5] R. A. DeLaura, R. F. Ferris, F. M. Robasky, S. W. Troxel, and N. K. Underhill, "Initial assessment of wind forecasts for Airport Acceptance Rate (AAR) and Ground Delay Program (GDP) planning," Lincoln Lab., Lexington, MA, USA, Tech. Rep. ATC-414, Jan. 2014.
- [6] B. Sridhar, S. Grabbe, and A. Mukherjee, "Modeling and optimization in traffic flow management," *Proc. IEEE*, vol. 96, no. 12, pp. 2060–2080, Dec. 2008.
- [7] G. Lulli and A. Odoni, "The european air traffic flow management problem," *Trans. Sci.*, vol. 41, no. 4, pp. 431–443, Nov. 2007.
- [8] Y. Jung, T. Hoang, K. Montoya, G. Gupta, W. Malik, L. Tobias, and H. Wang, "Performance evaluation of a surface traffic management tool for Dallas/Fort Worth International Airport," presented at 9th USA/Europe Air Traffic Manage. R&D Semin., Berlin, Germany, 2011.
- [9] J. Post, J. Gulding, K. Noonan, D. Murphy, J. Bonn, and M. Graham, "The modernized National Airspace System Performance Analysis Capability (NASPAC)," presented at 26th Congr. Int. Council Aeronautical Sci., Anchorage, AK, USA, 2008, Paper AIAA 2008-8945.
- [10] L. Li and J.-P. Clarke, "A stochastic model of runway configuration planning," presented at AIAA Guid., Navigat. Control Conf., Toronto, Canada, Aug. 2010, Paper AIAA 2010-7697.
- [11] C. A. Provan and S. C. Atkins, "Optimization models for strategic runway configuration management under weather uncertainty," presented at AIAA Aviation Technol., Integr., Oper. Conf., Fort Worth, TX, USA, 2010, Paper AIAA 2010-9149.
- [12] C. Weld, M. Duarte, and R. Kincaid, "A runway configuration management model with marginally decreasing transition capacities," *Adv. Oper. Res.*, vol. 2010, art. no. 436765 (21 pages), 2010. doi: 10.1155/2010/436765
- [13] R. Zhang and R. Kincaid, "Robust optimization model for runway reconfigurations management," presented at AIAA Aviation Technol., Integr., Oper. Conf., Virginia Beach, VA, USA, 2011, Paper AIAA 2011-6922.
- [14] M. J. Frankovich, D. Bertsimas, and A. R. Odoni, "Optimal selection of airport runway configurations," *Oper. Res.*, vol. 59, no. 6, pp. 1407–1419, Nov.–Dec. 2011.
- [15] X. Bai and P. K. Menon, "Decision support for optimal runway reconfiguration," presented at AIAA Aviation Technol., Integr., Oper. Conf., Los Angeles, CA, USA, 2013, Paper AIAA 2013-4397.
- [16] R. Oseguera-Lohr, N. Phojanamongkolkij, G. Lohr, and J. W. Fenbert, "Benefits assessment for tactical runway configuration management tool," presented at AIAA Aviation Technol., Integr., Oper. Conf., Los Angeles, CA, USA, 2013, Paper AIAA 2013-4395.
- [17] S. Houston and D. Murphy, "Predicting runway configurations at airports," presented at the Trans. Res. Board Annu. Meet., Washington, DC, USA, 2012, Paper 12-3682.
- [18] G. W. Lohr, S. Brown, H. P. Stough, S. Eisenhawer, S. Atkins, and D. Long, "System oriented runway management: A research update," presented at 9th USA/Europe Air Traffic Manage. R&D Semin., Berlin, Germany, 2011.
- [19] P.-C. B. Liu, M. Hansen, and A. Mukherjee, "Scenario-based air traffic flow management: From theory to practice," *Trans. Res. Part B*, vol. 42, pp. 685–702, 2008.
- [20] S. Chung and D. Murphy, "Developing a model to determine called rates at airports," presented at AIAA Aviation Technol., Integr., Oper. Conf., Fort Worth, TX, USA, 2010, Paper AIAA 2010-9257.
- [21] G. Buxi and M. Hansen, "Generating probabilistic capacity profiles from weather forecast: A design-of-experiment approach," presented at Ninth USA/Europe Air Traffic Manage. Res. Develop. Semin., Berlin, Germany, 2011.
- [22] R. Kicing, J. Krozel, M. Steiner, and J. Pinto, "Airport capacity prediction integrating ensemble weather forecasts," presented at AIAA Infotech@Aerosp. Conf., Garden Grove, CA, USA, 2012, Paper no. AIAA 2012-2493.
- [23] M. R. Endsley, "Toward a theory of situation awareness in dynamic systems," *Human Factors*, vol. 37, no. 1, pp. 32–64, 1995.
- [24] W. Kaliardos, "Semi-structured decision processes: A conceptual framework for understanding human-automation decision systems," Ph.D. dissertation, Dept. Aeronautics and Astronautics, Massachusetts Inst. Technol., Cambridge, MA, USA, 1999.
- [25] J. M. Histon, "Mitigating complexity in air traffic control: The role of structure-based abstractions," Ph.D. dissertation, Dept. Aeronautics and Astronautics, Massachusetts Inst. Technol., Cambridge, MA, USA, 2008.
- [26] K. I. Ahmed, M. Ben-Akiva, H. N. Koutsopoulos, and R. G. Mishalani, "Models of freeway lane changing and gap acceptance behavior," presented at 13th Int. Symp. Theory Traffic Flow Trans., Lyon, France, pp. 501–515, 1996.
- [27] M. Ben-Akiva and S. Lerman, *Discrete Choice Analysis: Theory and Application to Travel Demand*. Cambridge, MA, USA: MIT Press, 1985.
- [28] T. Yai, S. Iwakura, and S. Morichi, "Multinomial probit with structures covariance for route choice behavior," *Transp. Res. Part B*, vol. 31, no. 3, pp. 195–208, 1997.
- [29] D. McFadden, "Modelling the choice of residential location," in *Spatial Interaction Theory and Residential Location*, A. Karlqvist, L. Lundqvist, F. Snikars, and J. W. Weibull, Eds. Amsterdam, The Netherlands: North Holland, 1978.
- [30] D. Bolduc, B. Fortin, and M.-A. Fournier, "The effect of incentive policies on the practice location of doctors: A multinomial probit analysis," *J. Labor Econ.*, vol. 14, no. 4, pp. 703–732, 1996.
- [31] Federal Aviation Administration, "Aviation system performance metrics (ASPM) database." (2014). [Online]. Available: aspm.faa.gov
- [32] Federal Aviation Administration, "Airport diagrams." (2014). [Online]. Available: http://www.faa.gov/airports/runway_safety/diagrams/
- [33] Federal Aviation Administration. (2014, Jul.). "Facility operation and administration: Chapter 10. terminal operations, services, and equipment," order JO 7210.3. [Online]. Available: http://www.faa.gov/air_traffic/publications/atpubs/fac/
- [34] Federal Aviation Administration. (2014, Jul.). "Facility operation and administration: Chapter 17. coordination," order JO 7210.3. [Online]. Available: http://www.faa.gov/air_traffic/publications/atpubs/fac/
- [35] Federal Aviation Administration, "Newark Tower Standard Operating Procedures," order JO 7210.17.

- [36] M. Bierlaire, "Biogeme: A free package for the estimation of discrete choice models," presented at 3rd Swiss Trans. Res. Conf., Ascona, Switzerland, 2003.
- [37] D. R. Cox, "Tests of separate families of hypotheses," in *Proc. 4th Berkeley Symp.*, 1961, vol. 4, pp. 105–123.
- [38] D. R. Cox, "Further results on tests of separate families of hypotheses," *J. Royal Statist. Soc. Ser. B (Methodological)*, vol. 24, no. 2, pp. 406–424, 1962.
- [39] J. Hausman and D. McFadden, "Specification tests for the multinomial logit model," *Econometrica*, vol. 52, no. 5, pp. 1219–1240, 1984.
- [40] M. J. Frankovich, D. Bertsimas, and A. R. Odoni, "Optimal selection of airport runway configurations," presented at the INFORMS Annu. Meet., San Diego, CA, USA, 2009.
- [41] M. D. Peterson, D. J. Bertsimas, and A. R. Odoni, "Models and algorithms for transient queueing congestion at airports," *Manage. Sci.*, vol. 41, no. 8, pp. 1279–1295, 1995.



Hamsa Balakrishnan received the Ph.D. degree in aeronautics and astronautics from Stanford University, Stanford, CA, USA.

She is currently an Associate Professor of aeronautics and astronautics with the Massachusetts Institute of Technology, Cambridge, MA, USA. Her research interests include the design, analysis, and implementation of control and optimization algorithms for large-scale cyber-physical infrastructures, with an emphasis on air transportation systems.



Varun Ramanujam received the B.Tech. degree in civil engineering from the Indian Institute of Technology, Madras, Chennai, India, and the Ph.D. degree in civil and environmental systems from the Massachusetts Institute of Technology, Cambridge, MA, USA, in 2012.

He is currently a Research Scientist with Google, Inc., Mountain View, CA, USA. His research interests include optimization, game theory, and mechanism design for resource allocation problems, including air transportation systems.